



Life Is On Innovation Summit

Life Is On

Schneider
Electric

Life Is On

Schneider
Electric



Data Center In the Cloud and at the Edge

数据中心在云也在边

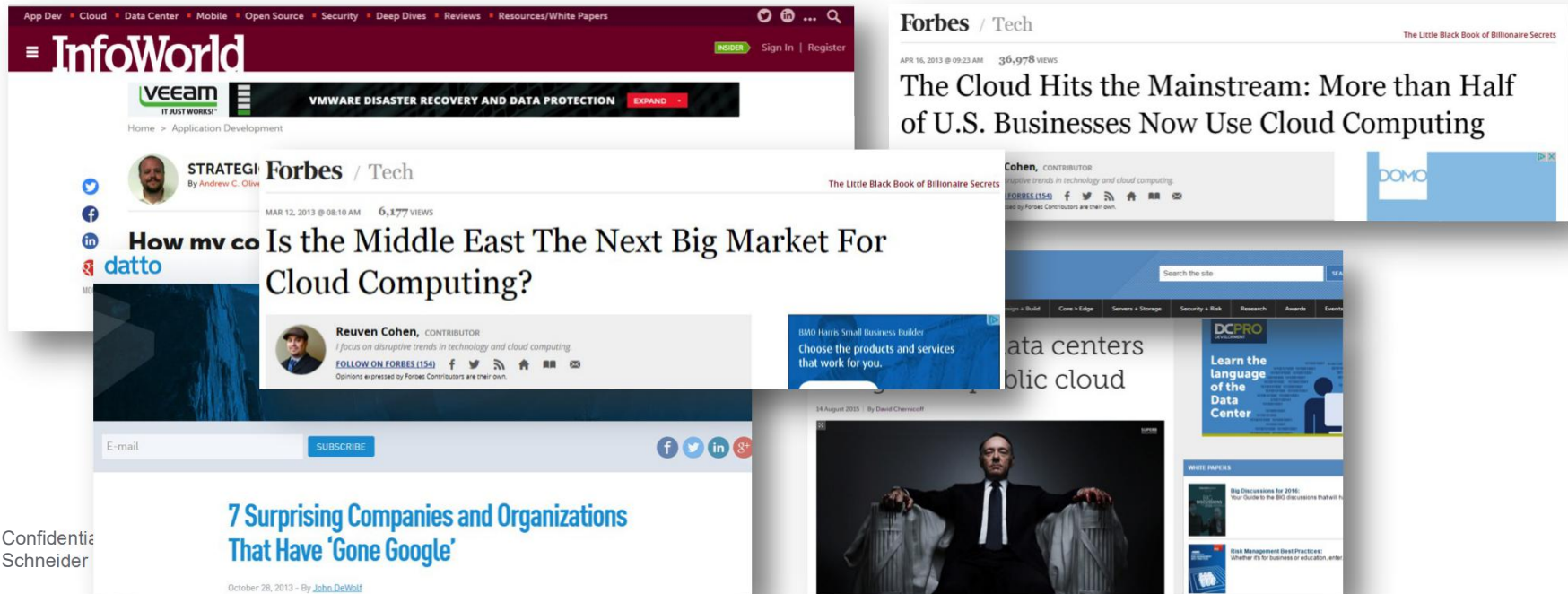
Life Is On

Schneider
Electric

Life Is On

Schneider
Electric

Not too long ago, our industry believed all computing would eventually centralize to the cloud



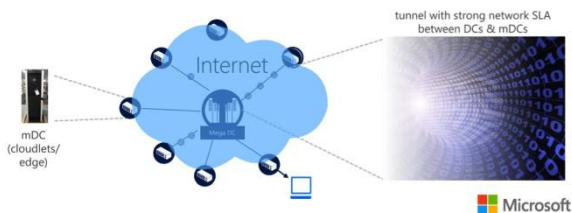
Confidential
Schneider

Recent industry moves showing a pendulum shift back, creating a decentralized, hybrid computing ecosystem

is building hyper-scale data centers enough?

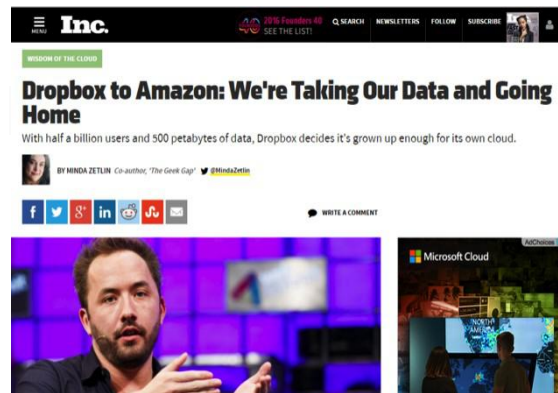
no, it's capital intensive and expensive to operate

smarter approach: build an extensive infrastructure of micro DCs (1-10s of servers with several TBs of storage, \$20K-\$200K/mDC) and place them everywhere



May 15, 2015

Microsoft
Page 4

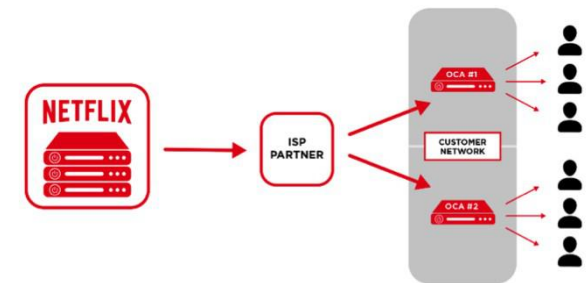


March 15, 2016

Dropbox

Basic architectures

The following diagram shows an example of OCAs that are embedded in a partner network, in conjunction with SFI peering which is used to provide additional resiliency and to enable nightly content fills and updates. Each site is served by a separate OCA or a set of OCAs, depending on your specific requirements.

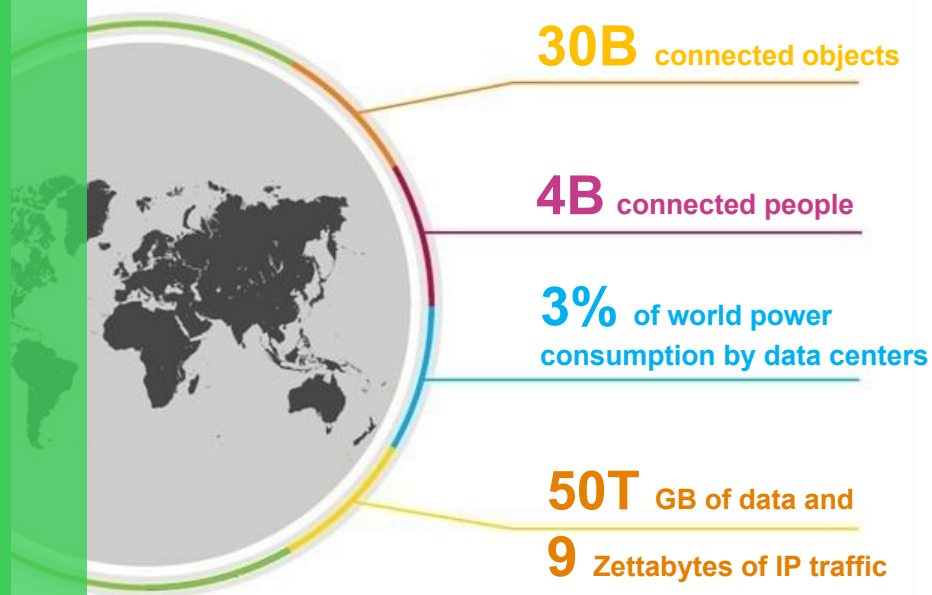


NETFLIX

By 2020, the world will be a different place...

...it is undergoing profound transformation to support the enormous data volumes and processing demands that are being generated by the Internet of Things (IoT).

The world in 2020...



Sources: Gartner, IDC, Uptime Institute, Cisco

Why is there a massive move to the cloud?

- Speed
- Scale
- Cost

Confidential Property of
Schneider Electric |

Page 6

*...the main building block
of clouds are centralized
hyperscale data centers...*



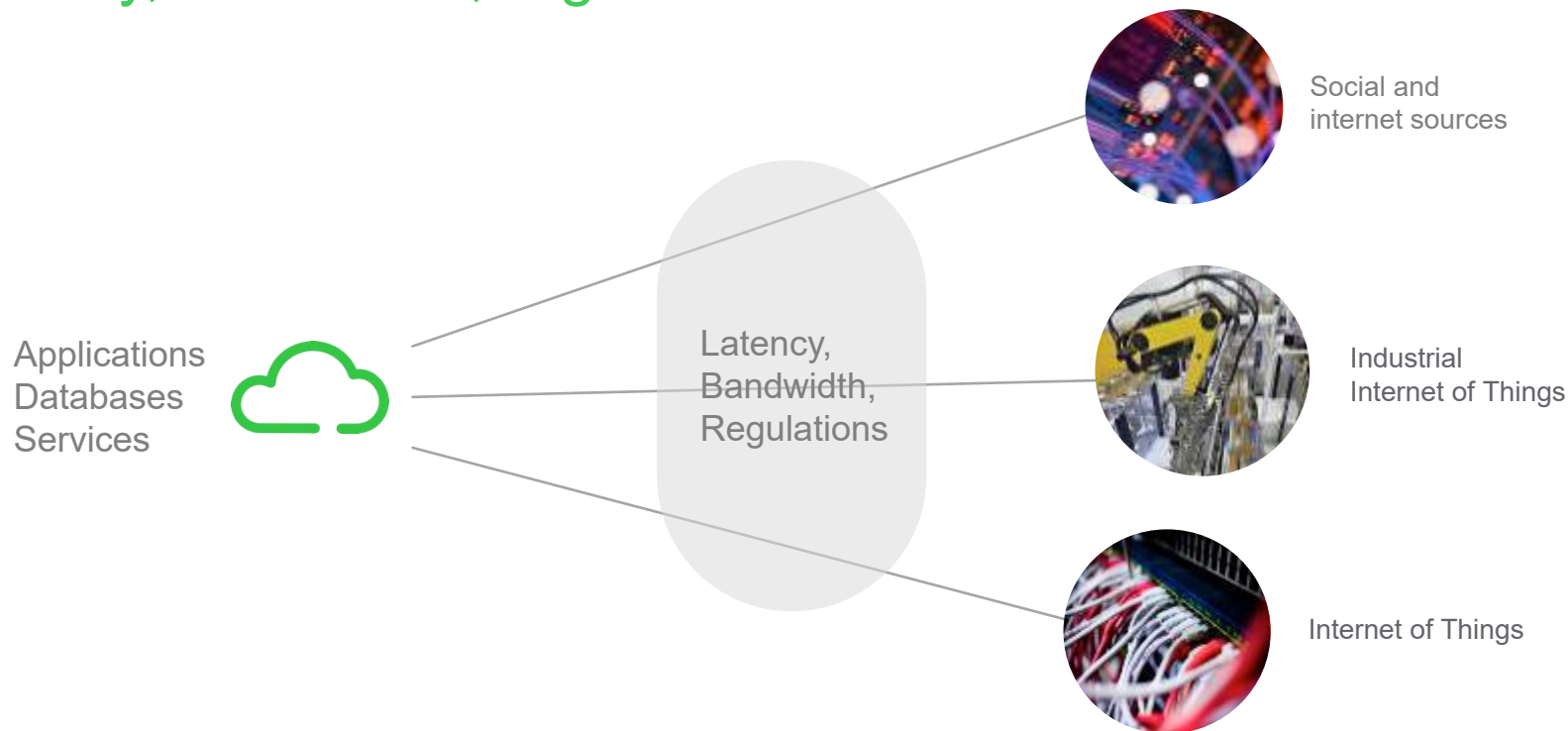
Life Is On

Schneider
Electric

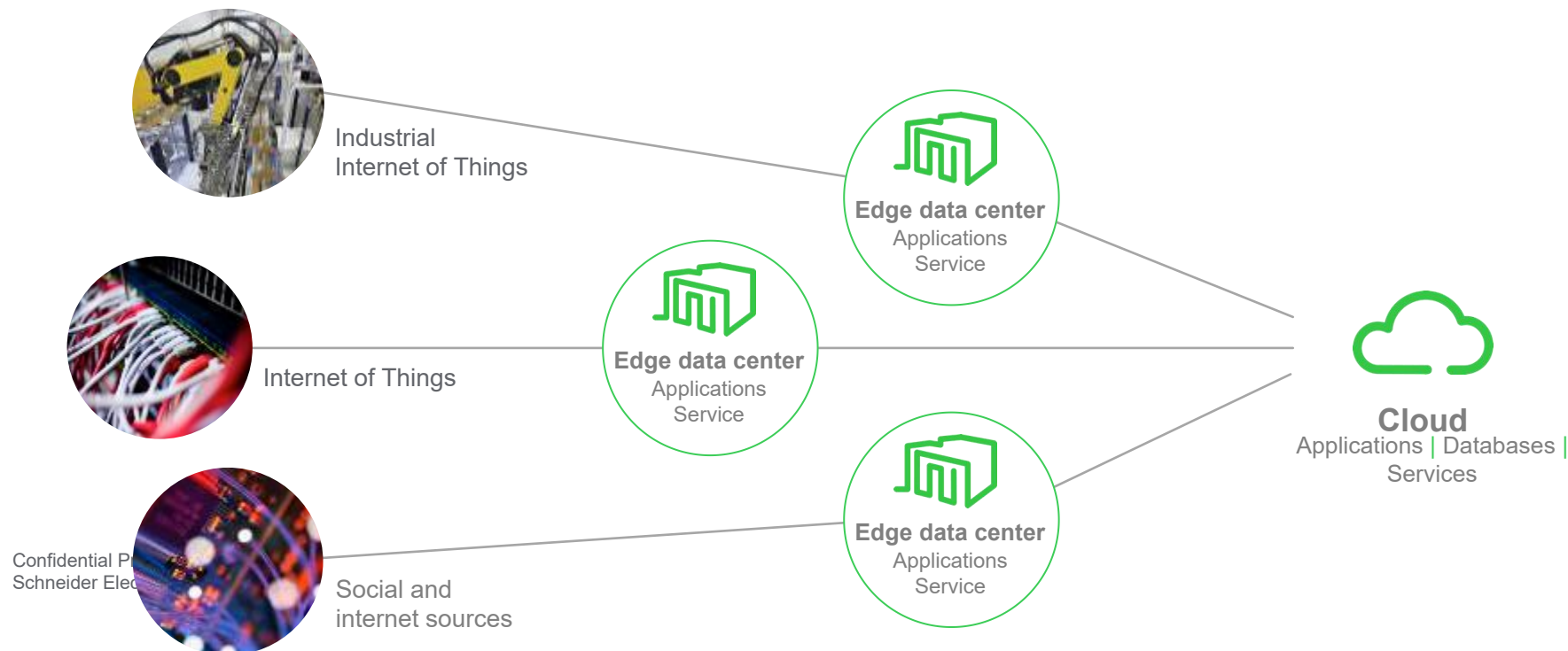
Life Is On

Schneider
Electric

The typical cloud network architecture has shortfalls: latency, bandwidth, regulations



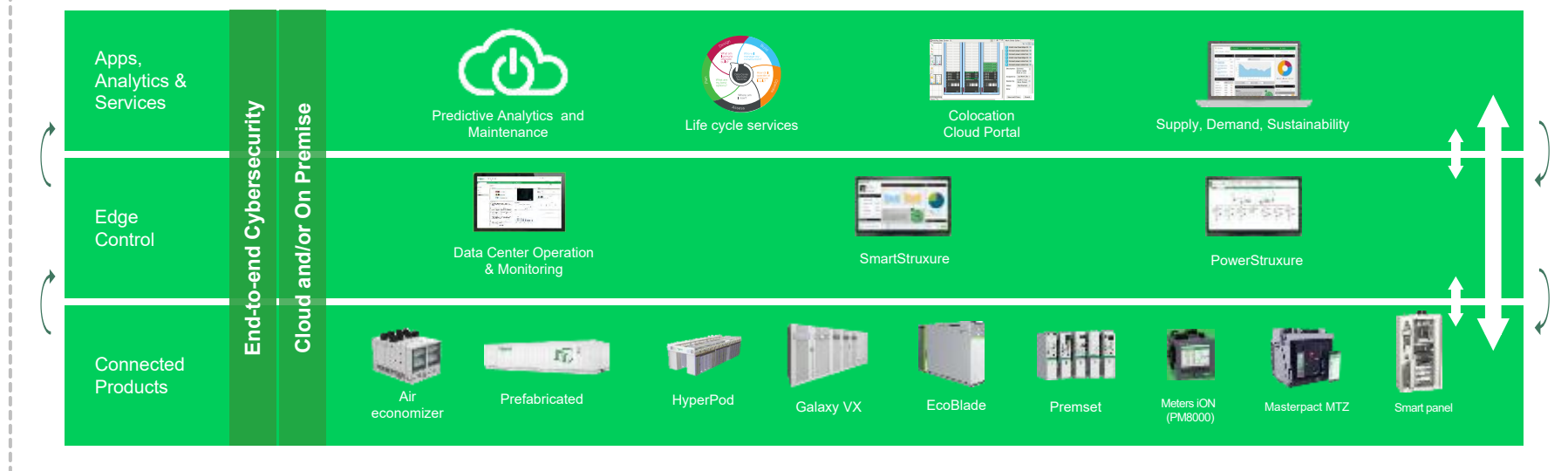
Edge solutions address these issues by putting applications and services closer to users and “things”



EcoStruxure™
Innovation At Every Level

Data Center

EcoStruxure Platform



The Internet of Things and analytics will enable a more effective way to manage and maintain these data centers



Traditional data collection



Monitoring & analytics
in the cloud



Smart connected "Things"
at the edge



Confidential Property of
Schneider Electric |

The future is moving to a cloud architecture of centralized, regional, and localized edge data centers

Centralized cloud data centers (Public or Private)



Confidential Property of
Schneider Electric |

Page 11

Augmented with localized 'edge' data centers



Leveraging IoT-enabled data center management



Data Center

In the Cloud and at the Edge

Ensuring
Life Is On
through data center
infrastructure innovation

Life Is On

Schneider
Electric



Sandra Ng
Group Vice President
Practice Group
IDC Asia/Pacific



Heng Wai Mun
Head of Hosting and Cloud
Services Business Products
Group Enterprise
Singtel



Adrian McPaul
Senior Vice President
Regional Head of
Critical Services, Asia
Citibank



Mark Bidinger
President
Cloud & Service Provider
Segment



Tung Meng Fai
Director Infocomms
& Media Division
Economic
Development Board
Singapore, EDB



David Johnson
Executive Vice President
IT Division



Moderator / Presenter



Life Is On Innovation Summit

Life Is On

Schneider
Electric

Life Is On

Schneider
Electric