

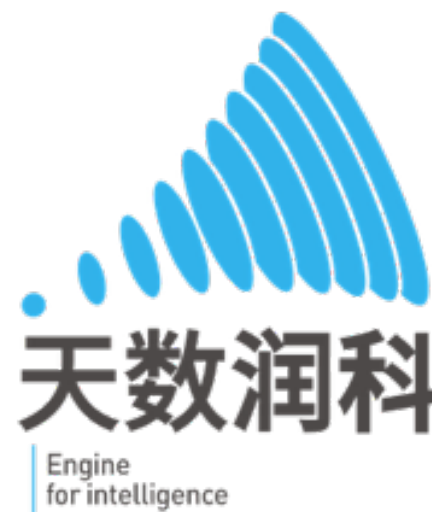


人工智能 企业云计算的新分水岭

南京天数科技
汪远



个人简介





议程

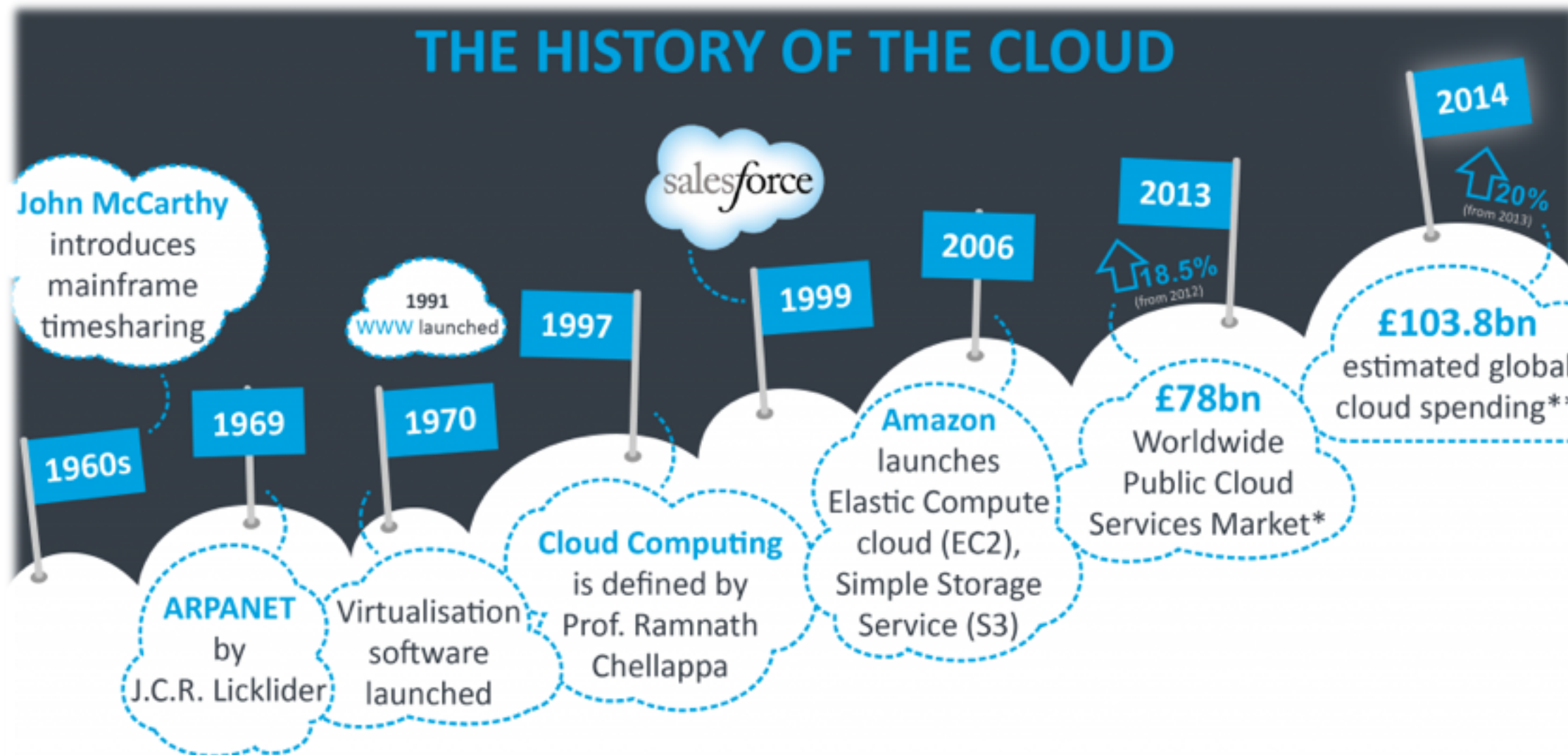
- 云计算与企业云计算
- 人工智能近年的大爆发
- 企业云计算在AI的布局
- 我们的一些推断



云计算的历史



云计算的历史



* Gartner, ** Constellation Research



企业云计算





企业云计算的历史



Innovate faster with Salesforce and Amazon Web Services.

企业云计算的历史 - Salesforce

2008 Force.com
a platform designed to simplify the development and deployment of cloud based applications and websites

2009 Chatter
connects every employee to the files, charts and experts that they want at any time

2013 Salesforce1
allows a user to wrap all customer related information within a consistent platform

HEROKU
2010

yammer

jive

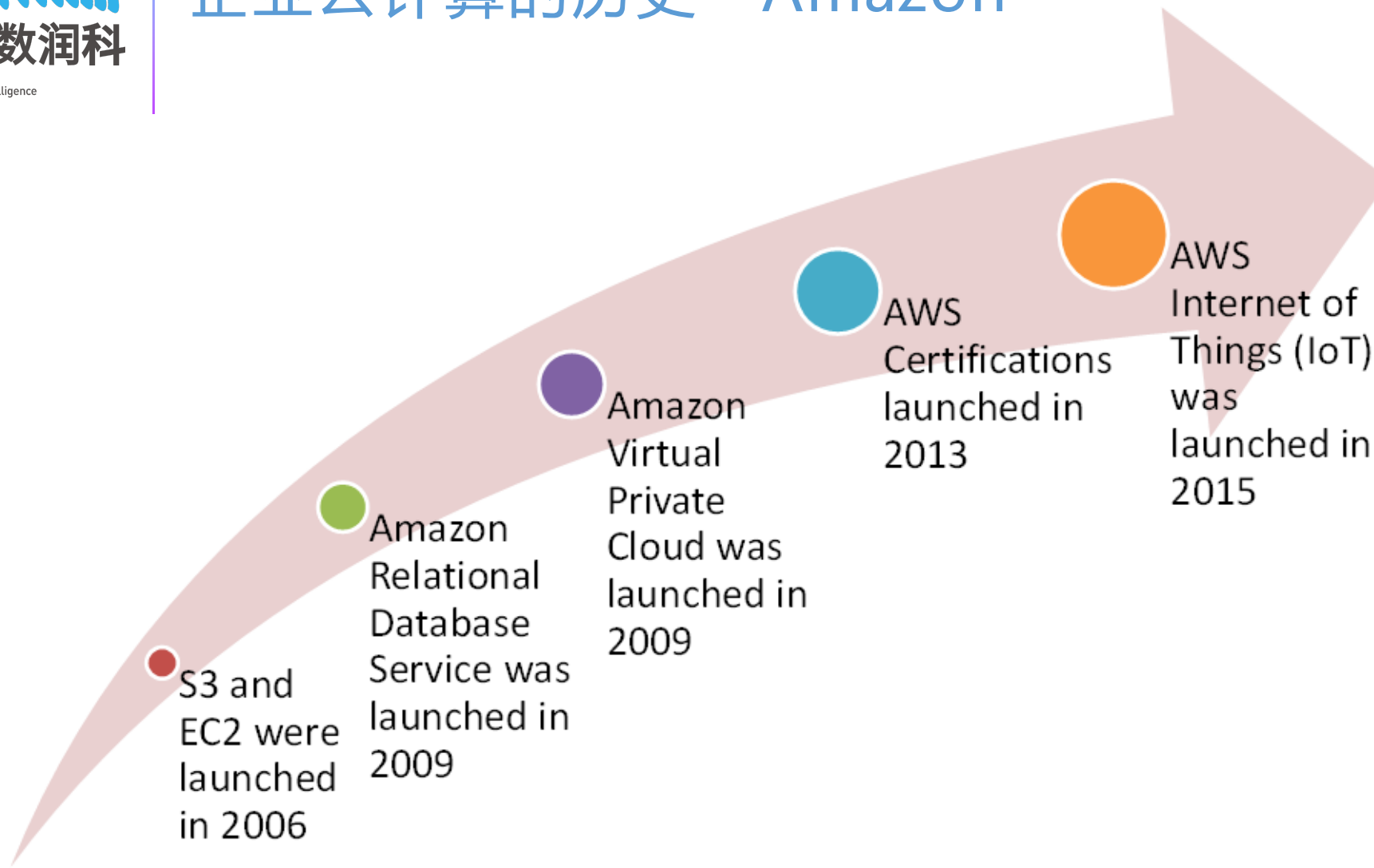
What is? **salesforce** Global cloud computing company.

Salesforce's biggest event **dreamforce** first held in 2003 with around 1,300 people jammed in a ballroom.

Every year, at **dreamforce**, **salesforce** releases a new product.

- 2005** **AppExchange**
marketplace of business applications and consulting partners
- 2006** **Apex**
an object oriented programming (OOP) language for Salesforce developers
- 2007** **VisualForce**
a framework that allows developers to build customer user interfaces
- 2008** **Force.com**
a platform designed to simplify the development and deployment of cloud based applications and websites
- 2009** **Chatter**
connects every employee to the files, charts and experts that they want at any time
- 2010** **Database.com**
enables users to focus on building apps, instead of managing databases
- 2011** **Radian6**
a social media monitoring and marketing application
- 2012** **Marketing Cloud**
a suite for social media
- 2013** **Salesforce1**
allows a user to wrap all customer related information within a consistent platform
- 2014** **Wave**
The Salesforce Analytics Cloud package

企业云计算的历史 - Amazon

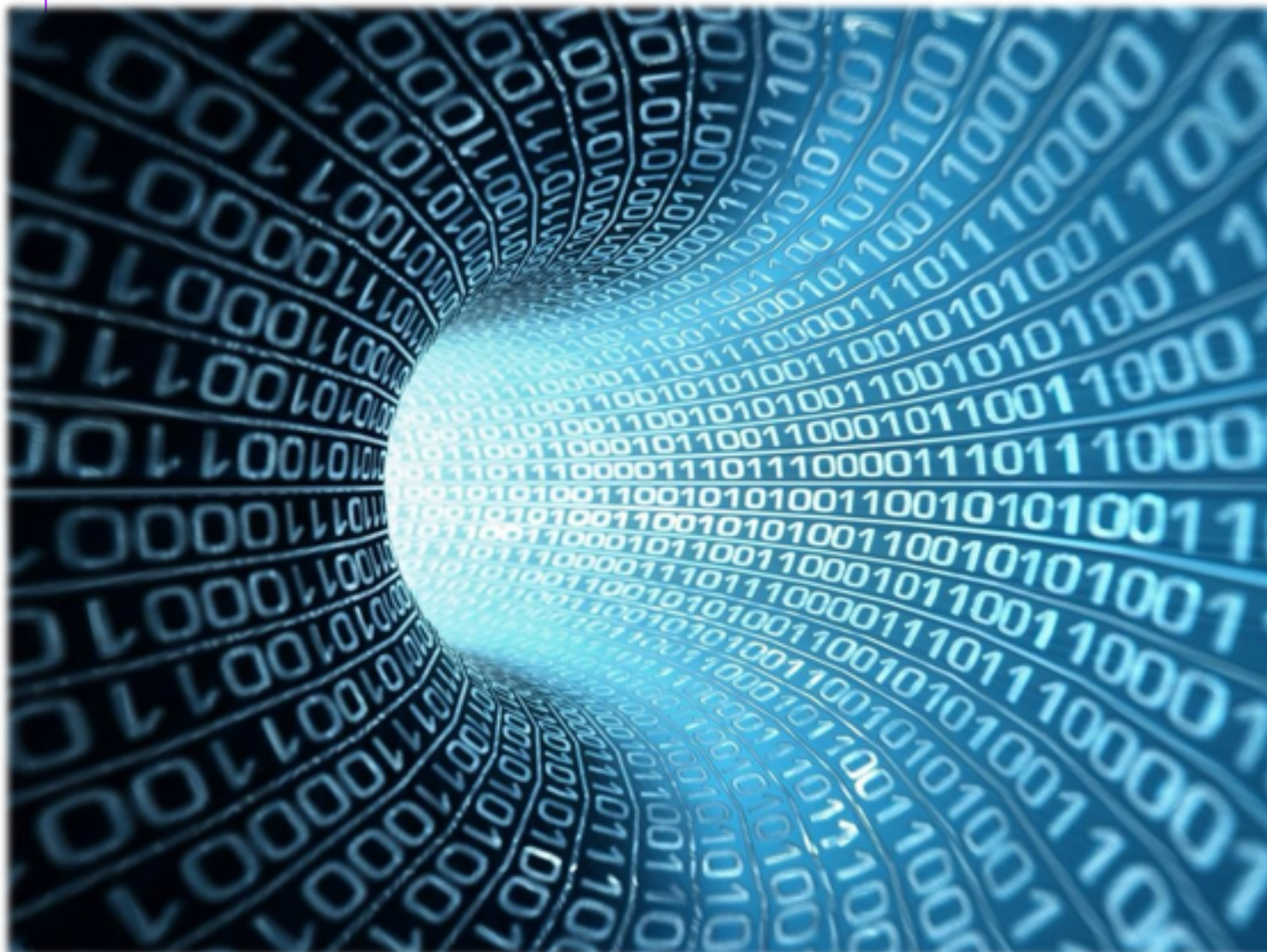




议程

- 云计算与企业云计算
- **人工智能近年的大爆发**
- 企业云计算在AI的布局
- 我们的一些推断

AI近年来的迅猛发展 – 原因



AI近年来的迅猛发展 - 理论



Geoff Hinton



Yann LeCun

IMAGENET
2012



Yoshua Bengio

AI近年来的迅猛发展 - 硬件

Jul 24, 2015 - Apr 04, 2017 +80.71 (402.14%)



Nvidia



Tesla P100, Data Center GPU

Dec 31, 2015 - Apr 04, 2017 +11.24 (384.93%)



AMD



\$1,200



DGX-1, AI Supercomputer

Dec 31, 2015 - Apr 04, 2017 +1.3 (3.72%)



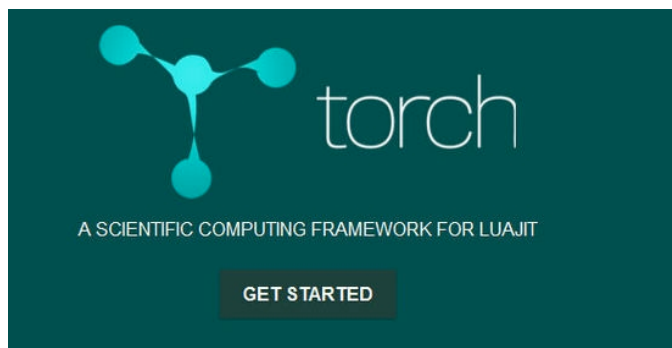
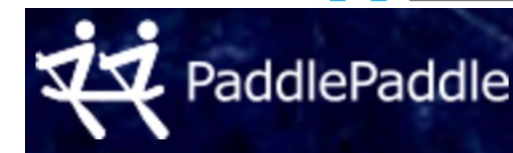
TPU



HGX-1



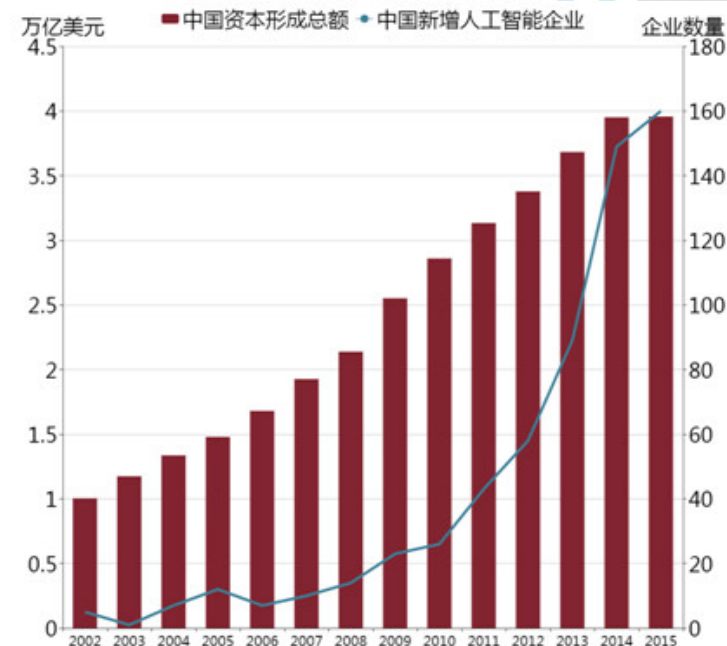
AI近年来的迅猛发展 - 开源社区



AI的近年来的迅猛发展 - 国内



NOAH'S ARK LAB
From Big Data to Deep Knowledge



中国AI投资领域资本形成总额与新增企业变化图
中国AI创业公司2016年总共融了68亿元

2017年3月，“人工智能”被首次写入《政府工作报告》。



议程

- 云计算与企业云计算
- 人工智能近年的大爆发
- **企业云计算在AI的布局**
- 我们的一些推断

企业云计算大厂的布局 – Google



Chief Scientist of AI/ML

Google Cloud

Jan 2017 – Present • 4 mos

Mountain View, CA



Google Cloud Next 2017



kaggle

企业云计算大厂的布局 – Amazon

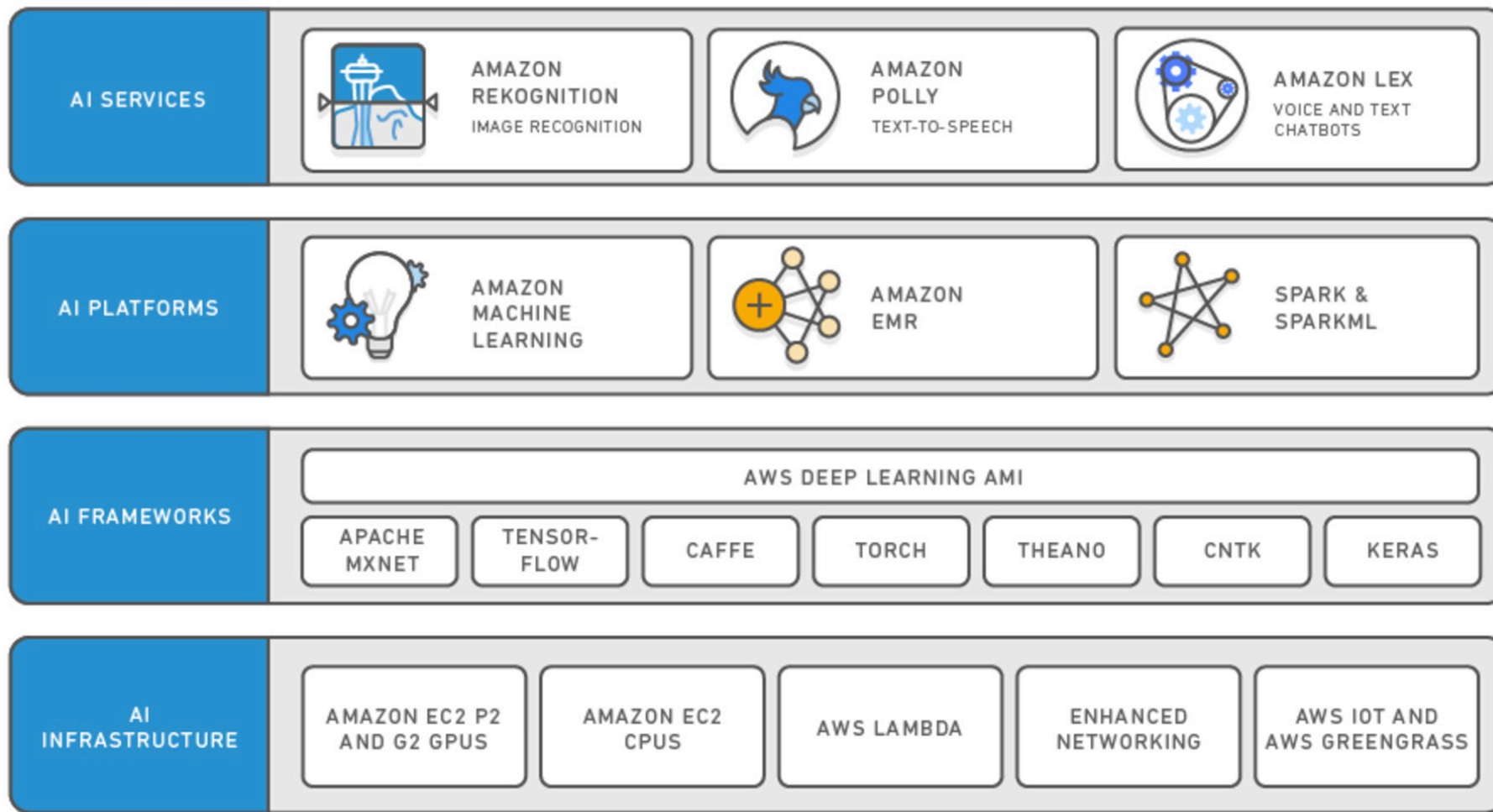


AWS re:Invent 2016



企业云计算大厂的布局 – Amazon

AI Solutions for Every Developer



企业云计算大厂的布局 – Salesforce



RelateIQ, July 11, 2014



MinHash, December 14, 2015



Richard Socher



MetaMind, April 4, 2016



Coolan, July 21, 2016



Tempo, May 29, 2015



PredictionIO, February 19, 2016



Implicit, May 9, 2016

企业云计算大厂的布局 – Salesforce





议程

- 云计算与企业云计算
- 人工智能近年的大爆发
- 企业云计算在AI的布局
- **我们的一些推断**



我们的一些推断

■ AI会是企业云计算的新分水岭

- 企业公有云公司天生就有AI所需要的数据，而AI对云计算SaaS，PaaS，IaaS都会有深远的影响
- AI做得好的企业云计算公司会在这几年得到更快的发展
- 做的不够好的会被拉开差距甚至淘汰

我们的一些推断

■ 行业巨头们已经完成布局

- 这一两年里这些大牛公司会迭代出很多相关产品
- 现在AI市场过热，现在才开始转做AI会追的很辛苦
- 现在很多AI相关的公司会激烈拼杀，一两年尘埃落定



我们的一些推断

■ 现在企业云计算做AI的机会

- 应用：要有数据和人才
- 平台：要有高性能



天数据科

Engine
for intelligence

谢谢聆听！

Q
&
A